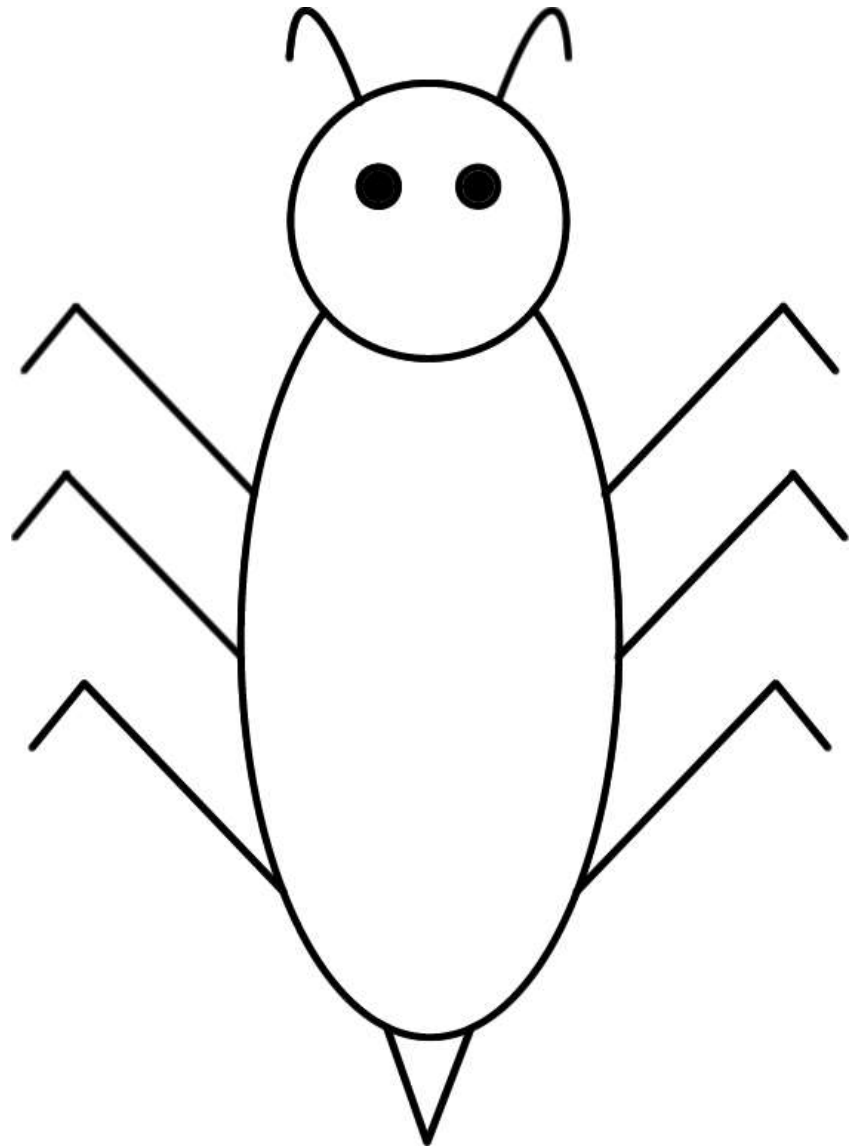


DRAW A BEETLE

Take turns rolling a die & draw the corresponding body parts.

The first player to complete their drawing shouts 'Beetle' and wins the game!

- 1 Body
- 2 Head
- 3 Legs
- 4 Eye
- 5 Feelers
- 6 Tail



Notes:

You need a head before eyes and feelers and a body before legs and a tail!

Each individual leg, eye and feeler is one roll, so you will need to roll a 'three' six times.