

2022-2023 QIP SUMMARY

Soci  t  Alzheimer Society

BRANT, HALDIMAND NORFOLK,
HAMILTON HALTON

SAFETY

Minimize the risk of COVID for clients

We will continue to monitor infection control policies and procedures and adjust as needed based on Public Health guidelines

PATIENT CENTERED

Improve client engagement

We will increase our program offerings for persons living with dementia through the use of volunteer matches and innovative approaches

EQUITABLE

Support expansion of services to Indigenous and under-served populations

We will dedicate resources to achieve greater collaboration with urban Indigenous persons affected by dementia and to increase our outreach to new areas

EFFICIENT

Expand use of volunteers and respond to new referrals in a more timely way

We will increase our engagement with volunteers to expand our reach through innovative approaches

We will implement recommendations to improve our intake processes

EFFECTIVE

Engage with Primary Care and help keep persons living with dementia home longer while supporting care partners

We will work with physicians to increase referrals for persons earlier in the disease and provide respite and education for care partners

OUR COMMITMENT

Société Alzheimer Society

BRANT, HALDIMAND NORFOLK,
HAMILTON HALTON

SAFETY

Everyday, we follow infection control practices in order to contribute to a healthy and safe environment



PATIENT CENTERED

Everyday, we demonstrate our commitment to client engagement and are flexible and adapt to meet expressed needs



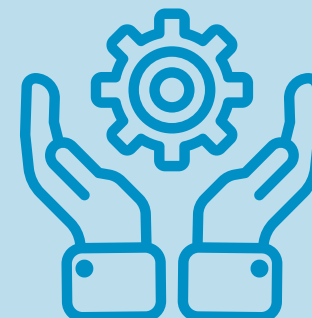
EQUITABLE

Everyday, we offer safe and welcoming services and increase our own cultural competency to create respectful relationships



EFFICIENT

Everyday, we support the value of volunteers and ensure clients have easy and timely access to our programs and services



EFFECTIVE

Everyday, we work to ensure a smooth and positive referral process for primary care and ensure care partners are aware of available supports

